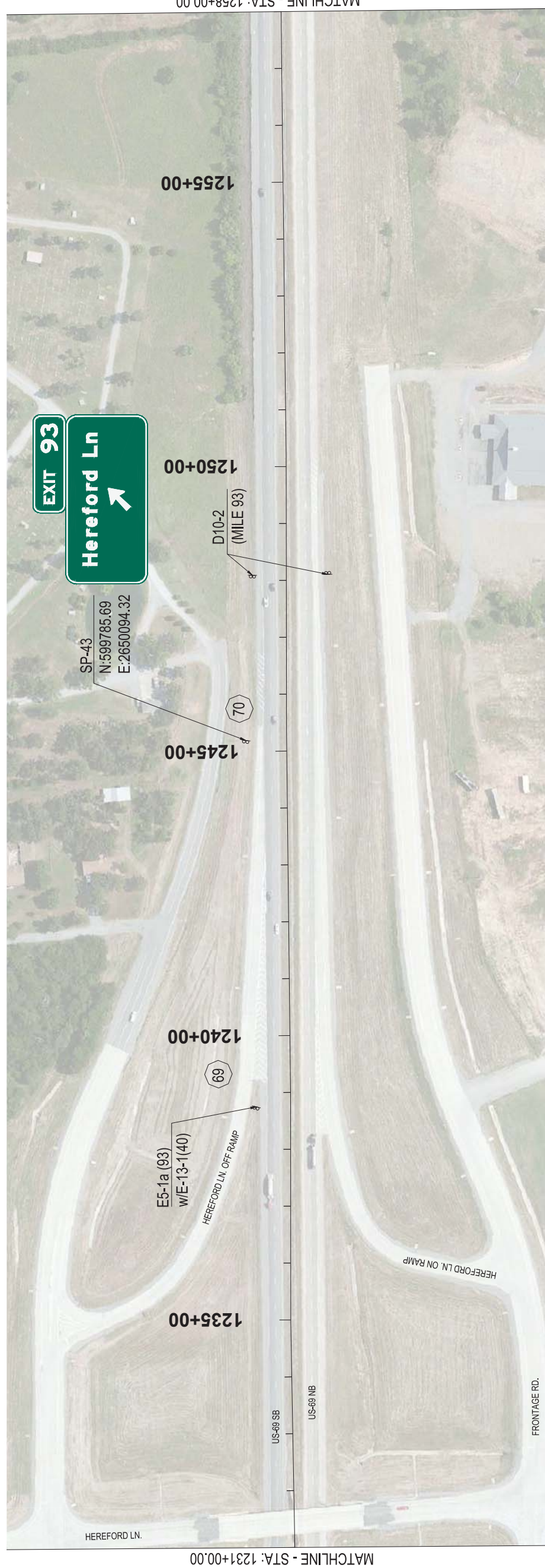


REV. NO.	DESCRIPTION	REVISIONS	DATE



MATCHLINE - STA: 1231+00.00

MATCHLINE - STA: 1258+00.00



MATCHLINE - STA: 1258+00.00

MATCHLINE - STA: 1285+00.00



1000 WEST WILSHIRE BLVD.
SUITE 403-E
OKLAHOMA CITY, OK 73116
PHONE: (405) 384-5127

US - 69
DIVISION 2

PITTSBURG COUNTY

SIGNING PLAN
STA: 1231+00 TO STA: 1285+00

State Job No. 33252(04) Sheet No. 84 OF 123